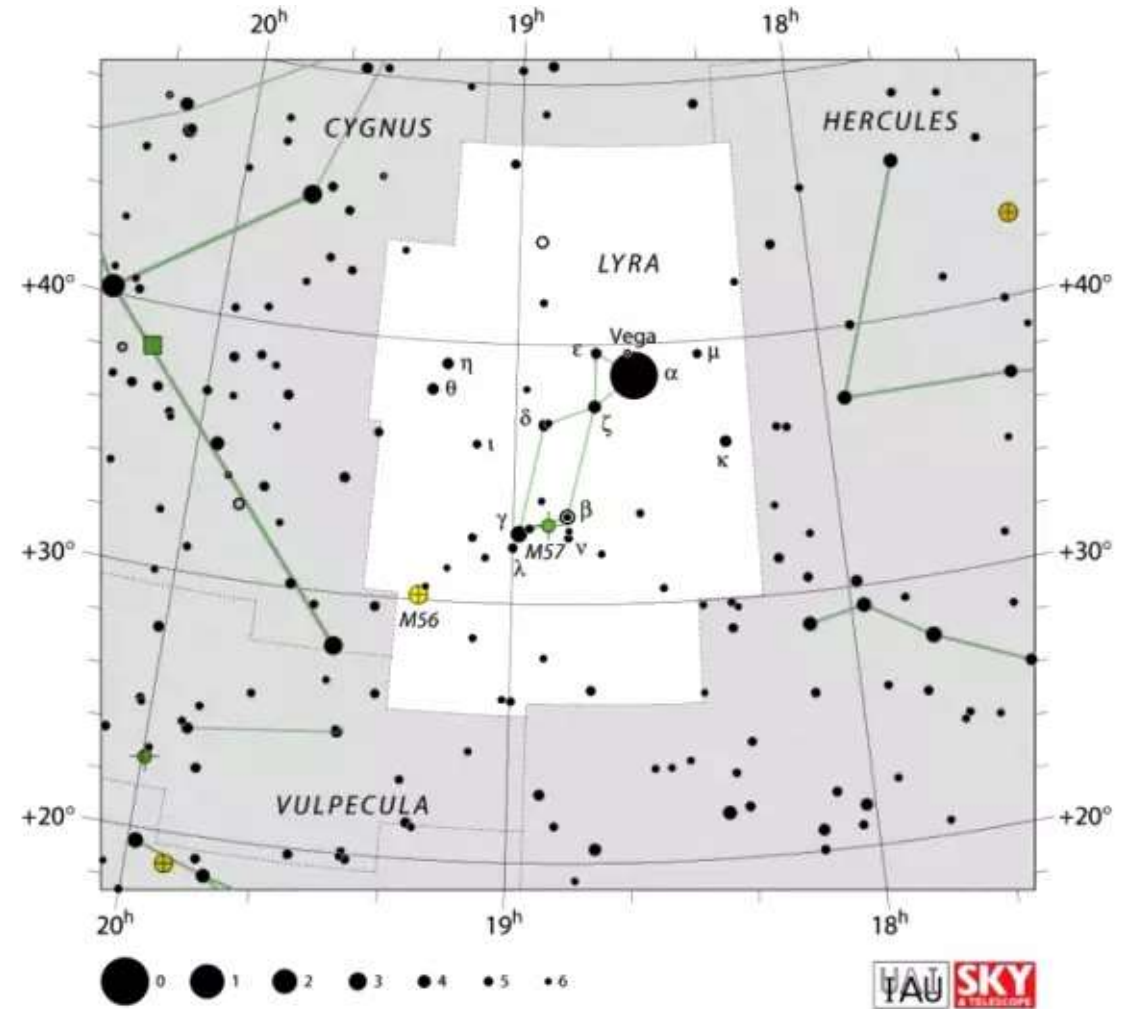


Binocular  
Observing  
June 2024 by  
Andrew  
Lohfink



# Lyra Constellation

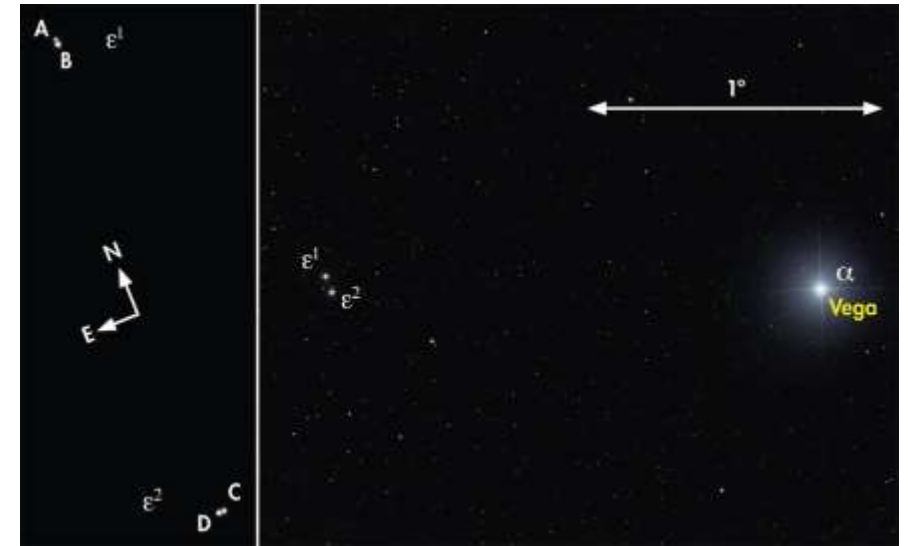
- Lyra is a small compact constellation visible in eastern skies at present.
- Look for the brightest star in the night sky – Vega – then look for the distinctive quadrilateral asterism close by.
- The asterism is the shape of an ancient harp – the lyre – and gives the constellation its name.



# Epsilon Lyrae – The double double.

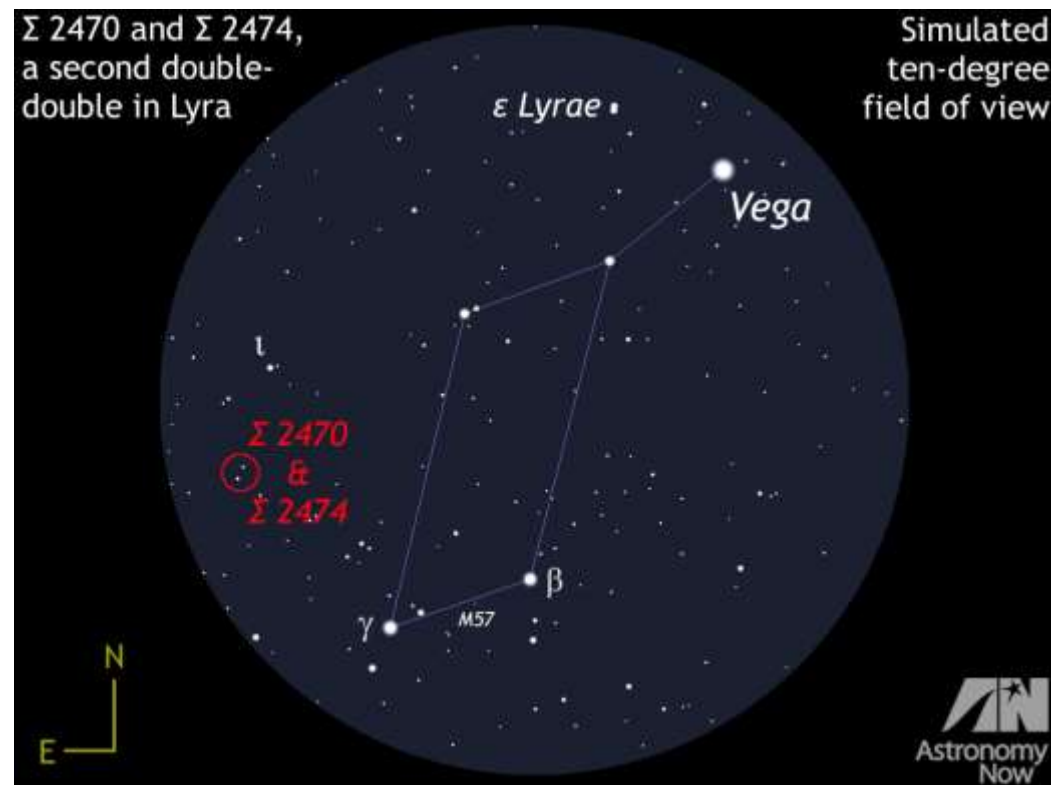
---

- Just to the east of Vega lies the naked eye visible Epsilon Lyrae.
- It is a double star easily split in x8 binoculars.
- Each star is also a double in its own right, but to split these needs a telescope.
- Epsilon Lyrae makes for a beautiful sight with Vega in the same field of view.



# The other double double in Vega

- There is another less well-known double double in Vega.
- Struve 2470 & 2474.
- Use the finder chart to locate this double double.



# Struve 2470 & 2474

- These two stars are easy to observe in the same field of view.
- They can be split in x20 binoculars as they have a separation of about 14 arcseconds.
- Look for the colour contrast of white and yellow between the two pairs



# T Lyrae

- T Lyrae is a lovely carbon star.
- Use the finder chart to locate the star.
- It is in the top left-hand corner of the chart marked with a red circle and the letter T.



# T Lyrae

---

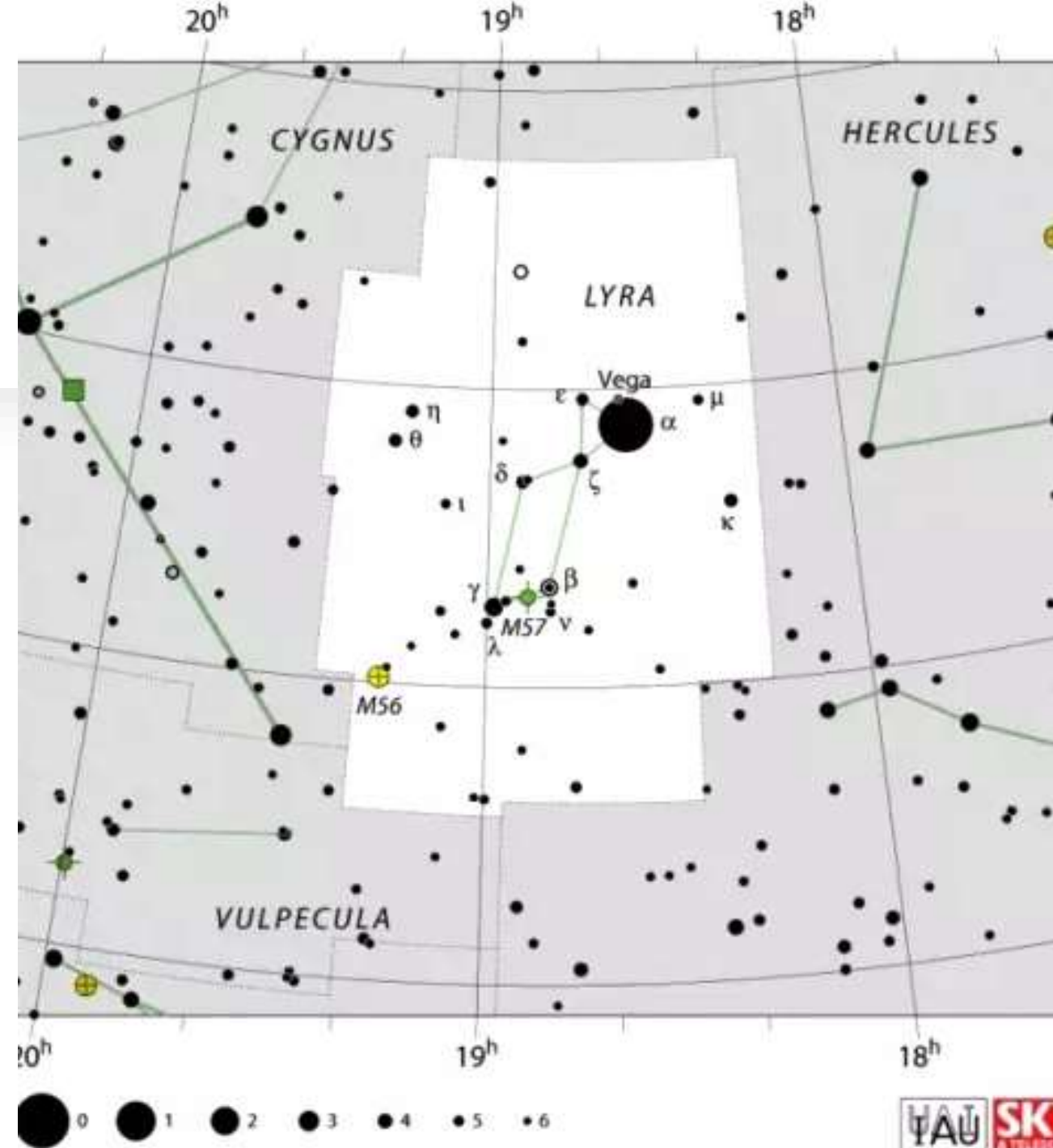
- Any binocular will reveal its deep red colour.
- Wide field binoculars show the background starfield with the colour of T Lyrae really standing out.
- The surface temperature of this carbon star is about 3500 degrees. It lies 2400 light years away.





# Delta Lyrae – A double star in a cluster

- Delta Lyrae forms one of the shoulders or the harp asterism and is easily seen with the naked eye.
- Delta 1 and Delta 2 Lyrae have a separation of 173 arcseconds so are easily split in any instrument.
- Delta 1 is also a double star, but the companion is too close to observe.





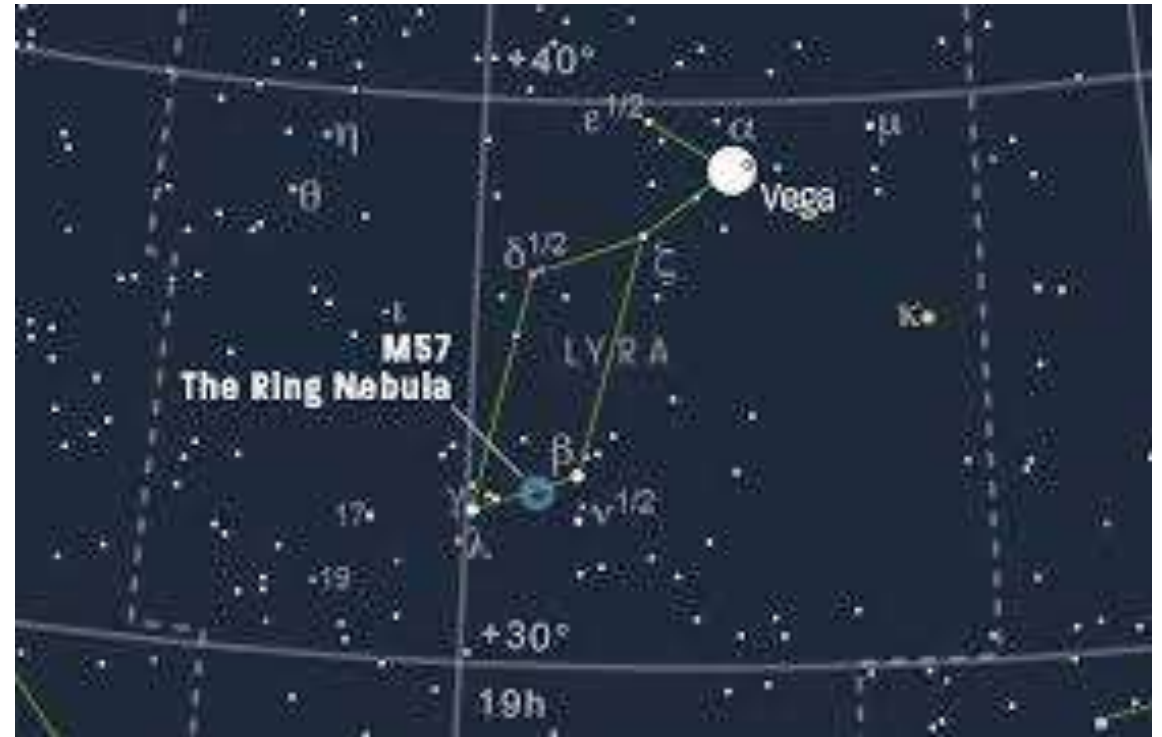
## Delta 1 & 2 Lyrae

- Look for the colour contrast of orange and blue.
- The system lies about 900 light years distant.
- There are several background stars which make up the open cluster Stephenson 1.
- This is a small cluster but makes for a beautiful sight with the delta system embedded in it.



# Messier 57 – The Ring Nebula

- Use the finder chart to locate perhaps the most famous planetary nebula in the night sky.
- The nebula is about 2300 light years away



# M57 – A Planetary Nebula

---

- M57 is clearly a nonstellar fuzzy object at low x10 magnifications.
- Higher magnifications above x25 will start to reveal its circular and then smokey ring shape

